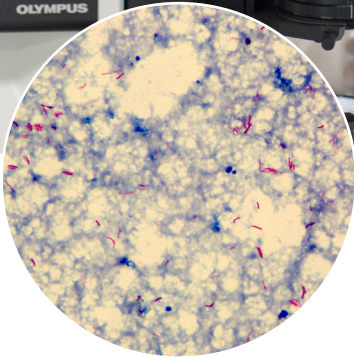


National TB Reference Laboratory

Department of Laboratory Medicine and Pathology



مؤسسة حمد الطبية
Hamad Medical Corporation

HEALTH • EDUCATION • RESEARCH صحة • تعليم • بحوث

NATIONAL TB REFERENCE LABORATORY

The laboratory workflow has three parts:

Mission:

To promote health and wellness in the State of Qatar by providing essential, high quality TB diagnostic services to the National TB Control Program and other healthcare partners in the country.

Vision:

To achieve supra-national status, collaborating with other regional countries and international partners in controlling global tuberculosis.

Goals:

To provide accurate, high quality controlled, cost effective diagnostic services for all TB patients in Qatar.

Tuberculosis diagnostics services:

Customers:

The National TB Reference Laboratory is the sole provider of TB diagnostics in the State of Qatar. It provides services to patients from government as well as private hospitals. The lists of customers are as follows:

1. Inpatients and outpatients: Communicable Disease Hospital, Hamad General Hospital, Rumailah Hospital, Women's Hospital, National Center for Cancer Care and Research, Al Khor Hospital, Al Wakra Hospital and The Cuban Hospital
2. Private hospitals
3. Patients attending PHCs.
4. Patients directed from the Medical Commission and Ministry of Public Health
5. Cases referred from Aspetar, the police and military clinics/hospitals.

Test menu:

The National TB Reference Laboratory has the following test menu:

- AFB microscopy: By both ZN and Auramine fluorescent staining.
- AFB cultures – both rapid automated liquid cultures and solid L J medium culture.
- Drug Sensitivity Testing for first line anti TB drugs.
- TB PCR for rapid diagnosis and Rifampicin resistant determination.
- Samples are referred to external reference laboratories



Department of Laboratory Medicine and Pathology

@ pathlabmed@hamad.qa

☎ Tel: 44391020/1021/6488

Patient and Family Education

@ patienteducation@hamad.qa

☎ 4439 1494/5

© 2016 Hamad Medical Corporation