

## What happens if I don't get treated?

### IF YOU ARE A WOMAN

- Chlamydia can expand into the uterus or fallopian tubes and produce pelvic inflammatory disease (PID), a dangerous illness of the reproductive organs if left untreated.
- Your fallopian tubes may be damaged by PID. You may be unable to conceive as a result of this injury, or an ectopic pregnancy may occur (pregnancy outside the uterus).
- PID can lead to persistent pelvic discomfort.
- If you don't cure your chlamydia, you risk infecting your child. Chlamydia may be quite harmful to a baby's health.

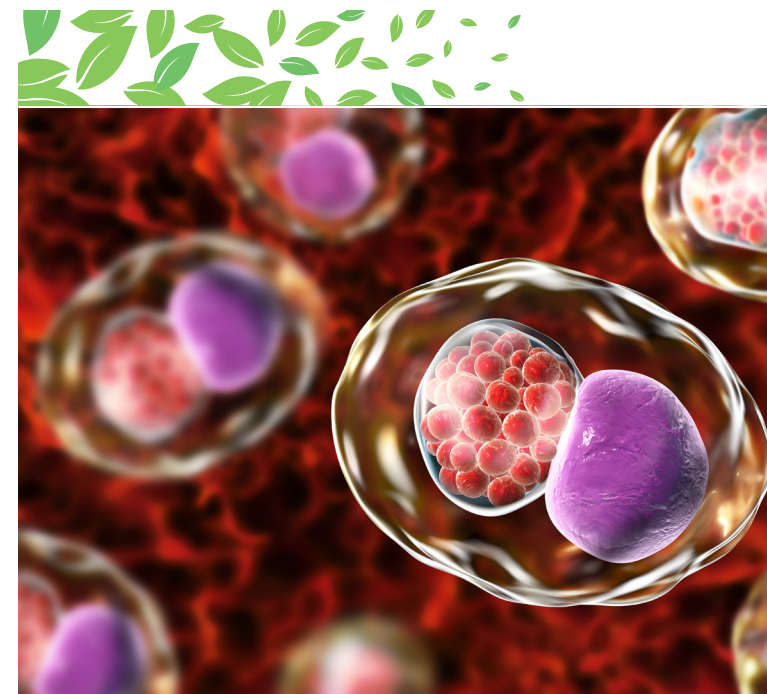
### IF YOU ARE A MAN

In men, chlamydia seldom causes long-term health issues. The tube that transports sperm from the testes or in the testes may become infected. This illness might result in discomfort and a high temperature. This illness may prohibit you from having children in rare situations.

### PROTECT YOURSELF AND YOUR PARTNER.

If your spouse is being treated for chlamydia, you should always seek medical attention. Treatment is required for both you and your companion. Also, if you or your partner detect any symptoms, such as an odd discharge, make an appointment with your doctor. Make sure your spouse is aware of the situation so that he or she may get tested as well. Discuss chlamydia and other STDs freely and honestly with your partner.

Your health care professional may also be able to give confidential partner notification. If you don't feel comfortable, you don't have to tell your partner. This, however, necessitates providing proper contact information for your partner(s) and accepting that your partner(s) may infer indirectly that they were suggested by you.



**For more information, call 40254025 HMC-STI clinic at the Communicable Disease Center**



**Patient and Family Education**

@ patienteducation@hamad.qa

© 2022 Hamad Medical Corporation

22-0030

# Chlamydia

## THE FACTS

- Chlamydia is a sexually transmitted infection that affects men and women (STD).
- Chlamydia is a contagious sexually transmitted infection that can affect anybody.
- Teenagers and young adults are particularly susceptible to it.
- The majority of chlamydia patients are unaware of their infection. Often, there are no symptoms associated with the condition.
- Without realizing it, you can spread chlamydia to others.
- Chlamydia is a disease that is simple to diagnose and treat.
- If chlamydia isn't treated, it might cause major health issues.

## How can I lower my risk for Chlamydia?

- The best approach to avoid contracting chlamydia is to avoid having sex at all, or to have sex only with someone who isn't infected and has only sex with you.
- If used correctly, condoms can minimize your chance of contracting chlamydia.
- Washing your genitals, peeing, or douching after intercourse will not protect you from contracting an STD.

## How does someone get chlamydia?

- Chlamydia may be contracted through anal, oral, or vaginal intercourse with someone who has it.
- If you have chlamydia while pregnant, you risk infecting your child.

## What are the symptoms of chlamydia?

### IF YOU ARE A WOMAN

Chlamydial infection in women in majority usually doesn't show symptoms. Chlamydia can be contracted through the cervix, rectum, or throat. There's a chance you won't notice any symptoms.

If you do have symptoms, you may notice the following:

- A strange discharge from your vaginal area.
- Urinating causes you to feel like you're burning.

- When you have sex, you may experience discomfort or bleeding.
- Lower abdomen ache, pain during sex, nausea, and fever may occur if the illness progresses.

### IF YOU ARE A MAN

Just like in women, chlamydial infection in men, usually doesn't show symptoms. Chlamydia can be contracted through the urethra, rectum, or throat. There's a chance you won't notice any symptoms. However, if you do experience symptoms, you may notice the following:

- A discharge from your penis.
- Urinating causes you to feel like you're burning.
- Itching or burning around your penis' entrance.
- Pain while passing feces or rectal discharge.
- Pain in the testicles.

## How would I know if I have chlamydia?

The doctor can test you for presence of chlamydia, so contact the doctor immediately. The test is easy and painless.

## When should I be tested?

### IF YOU ARE A WOMAN

If you're under 25 and having sex, you should get tested for chlamydia at least once a year.

- You're 25 or older and you're having sex with multiple partners.
- You're over 25 and have a new sexual partner.
- You are expecting a child.
- Before the IUD is inserted.

### IF YOU ARE A MAN

If your spouse has chlamydia or symptoms that might be chlamydia, you should seek medical attention. Tests for chlamydia should be done on gay, bisexual, and males who have

sex with men.

## If I have chlamydia and a partner, what could that mean?

- Your spouse might also be infected with chlamydia.
- Inform your recent sexual partners so that they may be checked and treated if necessary.
- Don't have sex for at least seven days after you've both begun therapy to avoid re-infecting each other.

## How is chlamydia treated?

- Antibiotics can be used to treat and cure chlamydia.
- Take the entire course of medication to ensure that you are cured.
- Don't give your medication to anybody else. You'll require all of it.
- Return to the doctor if your symptoms persist after treatment.
- Three months after finishing your treatment, you should be checked again. This is especially critical if you don't know if your spouse was handled as well.
- The treatment is extremely successful, but you must be re-tested after 3 weeks if you are pregnant, if your symptoms linger after starting the treatment, or if you received half regimens
- The doctor should be informed about the presence of pregnancy because it affects the choice of antibiotics.

## After the treatment, is it possible to get chlamydia again?

Yes, you can get chlamydia again. If the current partner gets untreated or a new partner with chlamydia, you can get it from them.