

# Al Khor Hospital

Department of Laboratory Medicine and Pathology



 **CAP**  
ACCREDITED   
COLLEGE of AMERICAN PATHOLOGISTS

مستشفى الخور  
Al Khor Hospital

عضو في مؤسسة حمد الطبية  
A Member of Hamad Medical Corporation



## CHEMISTRY/ENDOCRINE



### About

The Chemistry Laboratory at Al Khor Hospital is part of the Department of Laboratory Medicine and Pathology (DLMP). It aims to provide a high quality service to the people in the community, through cost effective, patient-centered care, utilizing state of the art technology. Staff are highly trained and keep up to date with the latest developments in the field through continuing education and development.

### Quality

There are guidelines in place on developing and implementing quality control procedures so that each process contributes to ensure maximum efficiency and effectiveness. There is a quality control process as part of every shift and a thorough evaluation enables the timely detection of potential errors.



### Education

Staff are enrolled in the CAP Competency Program. In-service lectures are also in place.

### Services provided

- Comprehensive Metabolic Panel
- Basic Metabolic Panel
- Liver Function Test
- Lipid Panel
- Cardiac Markers
- Iron Profile
- Thyroid Function Test
- Vit D
- Vit. B12
- Hormones

## HISTOPATHOLOGY SECTION

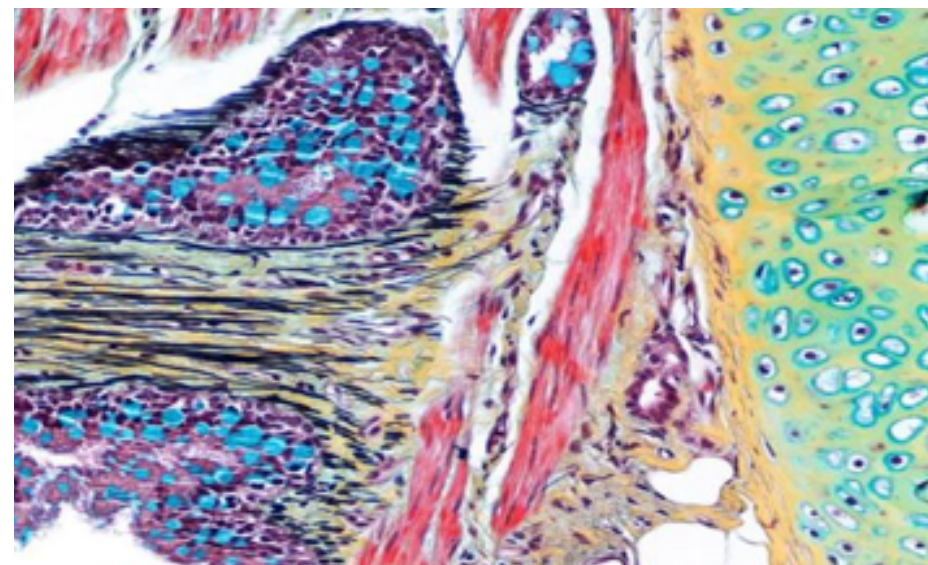


### About

The Histopathology Section at Al Khor Hospital is a Joint Commission International and College of American Pathologists accredited laboratory. The section is an integral part of the Department of Laboratory Medicine and Pathology at Hamad General Hospital. The AKH Histopathology Section deals with the processing and examination of a biopsy or surgical specimen by a pathologist. Specimens are processed to determine the nature of disease, the structural and functional changes of the cells, tissues and organs caused by the disease.

### Quality

Because we are aware of the fact that the quality of slides we produce has a great impact on arriving at the correct diagnoses, it is imperative that we adhere to strict quality standards, utilize the finest equipment and reagents and employ highly competent medical technologists.



### Education

Education activities such as in-service lectures, CME lectures, CAP on-line courses and assignments are conducted for staff development.

### Services provided:

- Surgical pathology
- Frozen section

### Laboratory services are provided to:

- Inpatients and outpatients of Al Khor Hospital.
- Inpatient and outpatients of Al Wakra Hospital.
- Al Khor community clinic



## HEMATOLOGY LABORATORY



### About

Al Khor Hematology Laboratory is a part of the Hematology Section in Hamad General Hospital, another integral part of the Department of Laboratory Medicine and Pathology. It provides around the clock clinical services to all inpatients and outpatients, health centers/clinics and hospital employees. The Hematology Laboratory works closely with other laboratories within Hamad Medical Corporation to deliver a comprehensive diagnosis.

### Quality

To ensure the provision of excellent quality care to our patients, the laboratory has a robust quality control program which includes maintaining good internal and external quality control and the monitoring of laboratory quality indicators.

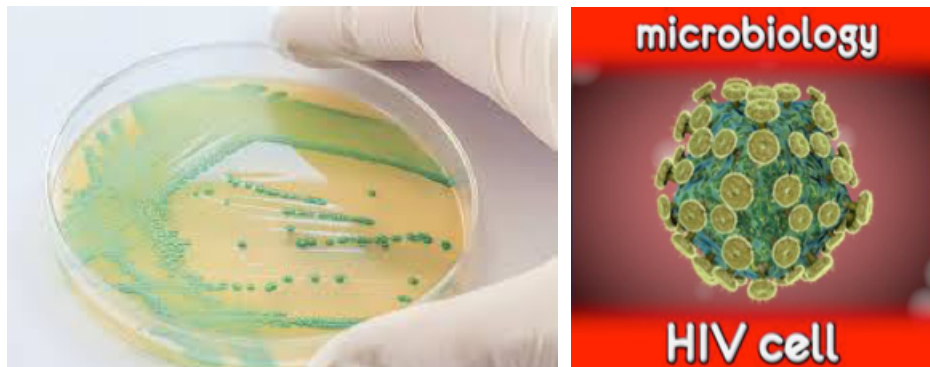
### Education

Educational activities such as in-service lectures and CME lectures are conducted regularly for staff development. Online CAP competency assessment courses are also provided to staff.

### Services provided

- Routine blood counts and differential counts using highly advanced automated blood count instruments
- Peripheral blood smear examination
- Screening and identification of blood parasites
- Examination of body fluids
- Bone marrow examination
- Routine blood coagulation test
- Miscellaneous tests such as Sickling test and Kleihauer tests etc.

## MICROBIOLOGY AND IMMUNOLOGY



### About

The Department of Microbiology is a center of excellence which incorporates the latest technology in laboratory testing and research. We provide high quality diagnostic laboratory services to Al Khor Hospital, health centers and the oil and gas industry. The department is also actively involved in the Hospital Infection Control Committee. The department values people by practicing mutual respect, professionalism, teamwork, integrity, trust, and accountability.

### Quality

Quality is assessed by setting performance indicators and monitoring targets. We maintain good internal and external quality control and modern standards of services. The section monitors the components of a system and implements improvements where required.

## Education

In-service education and CME lectures are conducted on a regular basis. The section also participates in the CAP Competency Assessment.

### Our Service

- Aerobic and anaerobic culture
- Antibiotic susceptibility testing
- Influenza A, Influenza B, Rota Virus, Adenovirus
- Selected toxins and antigens
- Parasitology (wet and iodine smear, concentration methods, trichrome stain)
- Molecular microbiology (PCR, probe test)
- HIV Ag/Ab, Hepatitis A IgM Ab's, Hepatitis C Ab's screening
- Hepatitis B viral markers, Syphilis Ab's, Rubella IgG Ab's and RPR

## TRANSFUSION MEDICINE SERVICE



### About

Al Khor Hospital is a JCI and CAP accredited hospital. The blood bank section is part of the HMC Transfusion Service and part of the Department of Laboratory Medicine and Pathology. It provides pre-transfusion testing for patients in the Emergency Department, Surgical, Antenatal, Medical and Pediatric Units. The available blood components are FPRBC, FFP, cryoprecipitate and platelets. Special blood requirements (i.e. irradiation, washed, CMV and Hb S negative blood) are sent to the Hamad General Hospital blood bank.

The Transfusion Medicine Service operates 24 hours a day, seven days a week.

### Quality

AKH Transfusion Services adhere to all standards required by organization such as JCI and CAP. Internal and external assessments are monitored showing satisfactory scores for all CAP Proficiency Testing Surveys.

### Education

The Transfusion Medicine Service provide continuous education through in-service lectures and CME lectures throughout the year.

### Services provided

- ABO/D typing
- Extended red cell phenotyping
- Antibody screening
- Antibody identification
- Antibody titration
- Direct Antiglobulin test and glycine acid-elution.
- Compatibility testing (AHG, IS, electronic)
- Investigation of hemolytic disease in newborns and immune hemolytic anemia.
- Investigation of transfusion reactions and drug-related hemolysis.

### Requirements for a Blood Transfusion Requisition:

1. All requests for blood and blood components must be ordered, signed and stamped by the requesting physician.
2. The blood bank forms (stock No: 962004), should be used when requesting any test or blood component.
3. Requests for blood and blood components should comply with corporation guidelines for transfusion of blood and blood components.

Surgical patients should also comply with the Maximal Surgical Blood Ordering Schedule (MSBOS)

4. Completing the request form: The request form should contain the following information to allow a positive patient's identification:

- 4.1. Patient's first, middle and last name
- 4.2. Patient's hospital number
- 4.3. Age and sex
- 4.4. Patient's location
- 4.5. Doctor's stamp and signature
- 4.6. Date and time of collection
- 4.7. Phlebotomist signature
- 4.8. Clinical diagnosis and the reason for transfusion
- 4.9. History of previous transfusion
- 4.10. History of previous pregnancies, if applicable
- 4.11. Medications

5. If blood or blood components are requested:

- 5.1. Type of component
- 5.2. Number of units required
- 5.3. Any special requirements e.g. washed or Irradiated components

6. Specimen requirements:

- 6.1 Adults = 4 ml EDTA

- 6.2 Children 4 months to 2 years = 2ml EDTA

- 6.3 Neonates Less than 4 months = 1 ml EDTA

- 6.4 An extra sample may sometimes be needed for extra tests mainly performed to determine the titer of anti-D

7. Specimen Labeling Requirements:

- 7.1 All specimens sent to the blood bank should be properly and clearly labeled and the label should contain minimum patient's identification details including:

- 7.1.1 Patient's first, middle and last names and hospital number.
- 7.1.2 Patient's location.
- 7.1.3 Date and time of blood collection.
- 7.1.4 Identity of the person collecting the blood.
- 7.1.5 Specimens should NEVER be relabeled

8. Processing of requests by the blood bank:

- 8.1 Routine Requests: All requests for type and screen, elective surgical procedures and elective transfusions are treated as routine. All routine requests will be processed within 24 hours after receiving the specimen, except for some tests that may need more than 24 hours.
- 8.2 Requests of cross-match for elective surgery or elective blood transfusions must be received before 1pm on the day before the operation or the intended transfusion
- 8.3 Urgent Requests: Requests labeled as urgent or STAT will be processed immediately after being received by the blood bank.



**Department of Laboratory Medicine & Pathology**

@ pathlabmed@hamad.qa

☎ Tel: 44391020 / 1021/ 6488

Process by:  
Patient and Family Education  
patienteducation@hamad.qa

© 2016 Hamad Medical Corporation

16-0048