

Epinephrine Auto-Injection

Possible mild side effects of epinephrine

- Fast or irregular heart beats
- Sweating
- Nausea and vomiting
- Pale skin
- Dizziness
- Muscle tremors
- Headache
- Nervousness and anxiety

Serious side effects

- High blood pressure
- Severe headache
- Blurred vision
- Flushed skin
- Difficulty in breathing

If you develop any of these side effects please inform your doctor as soon as possible.



Pediatric Immunology - Allergy

@ patienteducation@hmc.org.qa
☎ 4439 2981

© 2011 Hamad Medical Corporation

11_0808

Epinephrine Auto-Injection

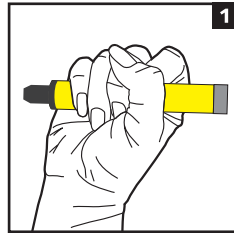
What is epinephrine injection?

Epinephrine is a medication that narrows blood vessels and opens airways in the lungs. It also relieves itching and hives.

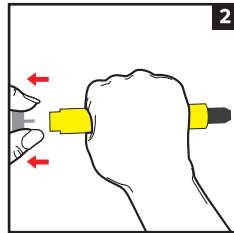
Epinephrine injection is used for emergency treatment of severe allergic reactions (including anaphylaxis) to insect bites or stings, medicines, foods, or other substances. It is also used to treat anaphylaxis caused by unknown substances or triggered by exercise.



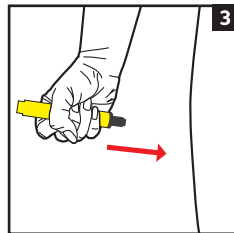
How to use an epinephrine auto-injector:



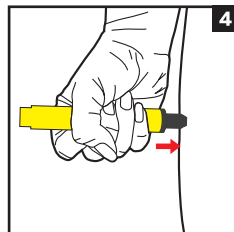
Grasp auto-injector in dominant hand (the hand you use to write), with thumb nearest grey cap and form fist around unit (black tip down).



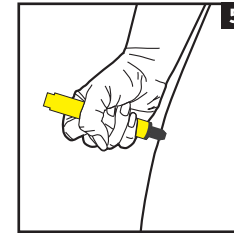
With other hand pull off grey safety cap.



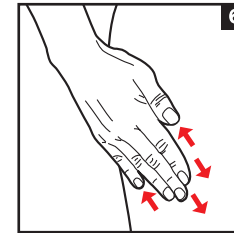
Hold the auto-injector at a distance of approximately 10cm (4 inches) away from the outer thigh. The black tip should point towards the outer thigh.



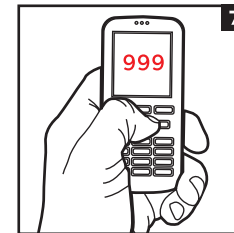
Jab the auto-injector **firmly** into outer thigh at a right angle (90 degree angle). Listen for click.



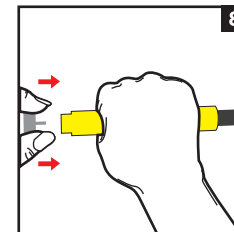
Hold firmly in thigh for 10 seconds. The auto-injector should be removed and safely discarded.



Massage the injection area for 10 seconds.



Call Emergency services immediately.



Re-cap the auto-injector and take it with you to the emergency room so that the doctor will know that you have had a shot of epinephrine and the amount you received. Each auto-injector delivers a single dose of epinephrine.